

# Five Note Scales

B flat concert

1 2 3 4 5

Flute

B flat concert

Oboe

B flat concert

Clarinet in B $\flat$

B flat concert

Alto/Bari Sax

B flat concert

Tenor Sax

B flat concert

1 2 3 4 5

Trumpet in B $\flat$   
Baritone T.C.

B flat concert

1 2 3 4 5

Horn in F

B flat concert

Trombone  
Euphonium  
Bassoon

B flat concert

Tuba

B flat concert

Mallets (low)

B flat concert

Mallets (high)

# Five Note Scales

E flat concert

6 7 8 9 10

Fl.

E flat concert

Ob.

E flat concert

B $\flat$  Cl.

E flat concert

A. Sx.

E flat concert

T. Sx.

E flat concert

6 7 8 9 10

B $\flat$  Tpt.

E flat concert

6 7 8 9 10

Hn.

E flat concert

Tbn.

E flat concert

Tuba

E flat concert

Mlts.

E flat concert

Mlts.

Five Note Scales

F concert

Fl.

Ob.

B♭ Cl.

A. Sx.

T. Sx.

B♭ Tpt.

Hn.

Tbn.

Tuba

Mlts.

Mlts.

11 12 13 14 15

Five Note Scales

A flat concert

16 17 18 19 20

Fl.

A flat concert

Ob.

A flat concert

B $\flat$  Cl.

A flat concert

A. Sx.

A flat concert

T. Sx.

A flat concert

16 17 18 19 20

B $\flat$  Tpt.

A flat concert

16 17 18 19 20

Hn.

A flat concert

Tbn.

A flat concert

Tuba

A flat concert

Mlts.

A flat concert

Mlts.

Five Note Scales

C concert

21 22 23 24 25

Fl.

C concert

Ob.

C concert

B $\flat$  Cl.

C concert

A. Sx.

C concert

T. Sx.

C concert

21 22 23 24 25

B $\flat$  Tpt.

C concert

21 22 23 24 25

Hn.

C concert

Tbn.

C concert

Tuba

C concert

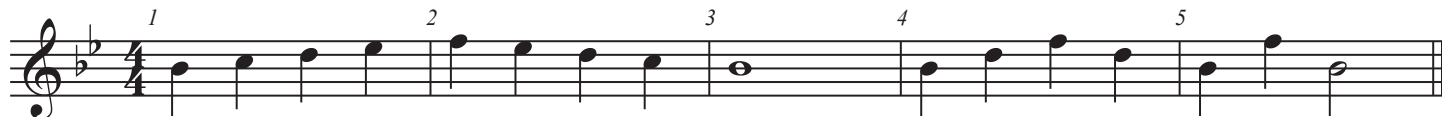
Mlts.

C concert

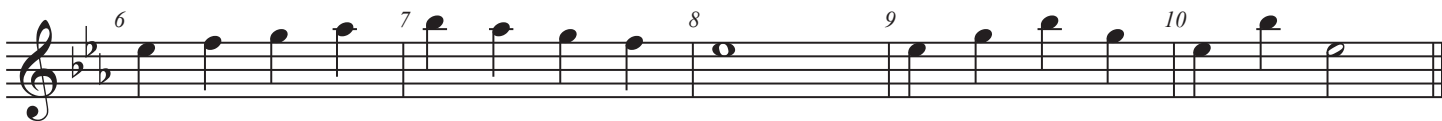
Mlts.

# Five Note Scales

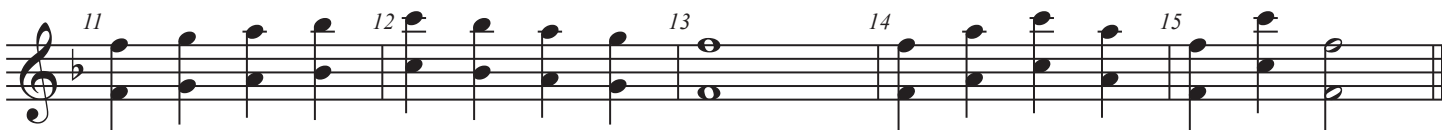
B flat concert



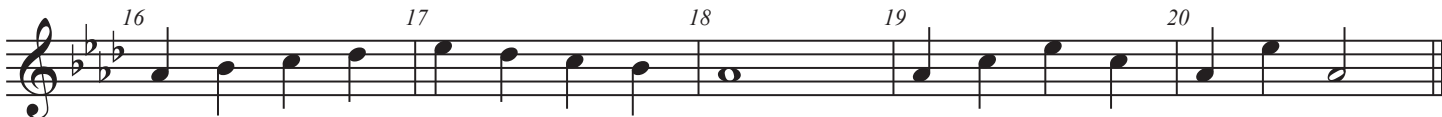
E flat concert



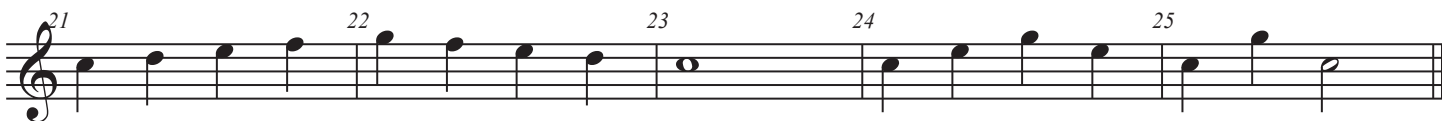
F concert



A flat concert

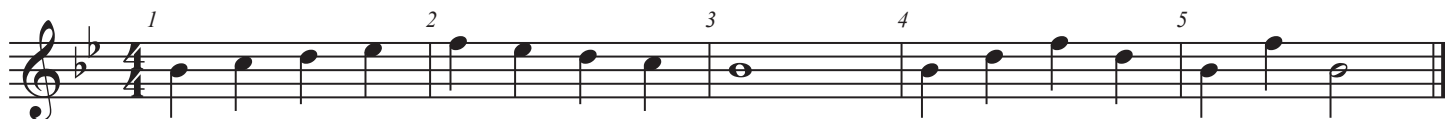


C concert

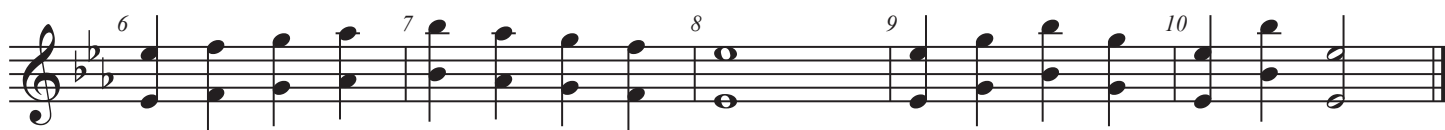


# Five Note Scales

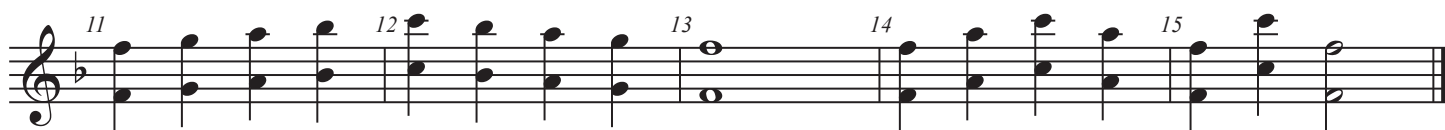
B flat concert



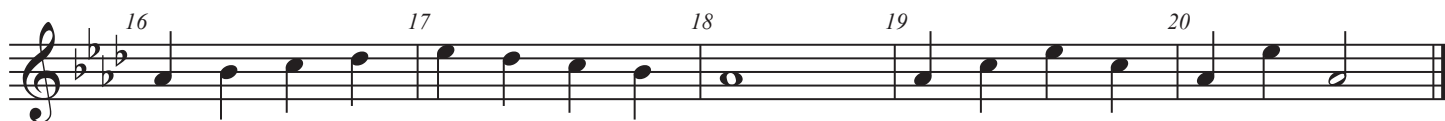
E flat concert



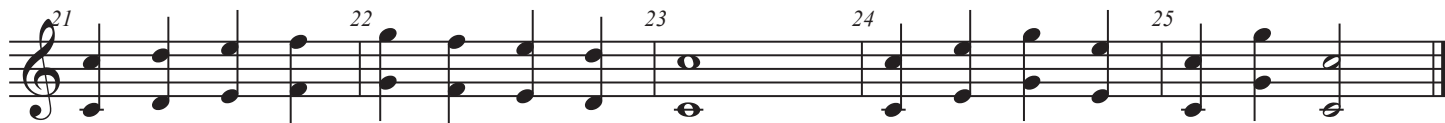
F concert



A flat concert



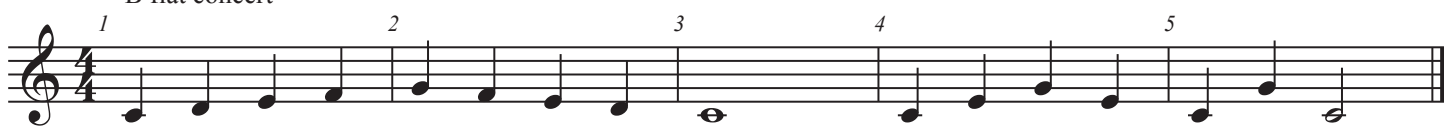
C concert



Clarinet in B $\flat$

# Five Note Scales


B flat concert



1 2 3 4 5

A musical staff in treble clef with a key signature of one flat (B-flat) and a 4/4 time signature. It contains five measures of music, each starting with a finger number (1, 2, 3, 4, 5) above the first note. The notes are: 1. B-flat, 2. C, 3. D, 4. E-flat, 5. F. Each measure contains a sequence of quarter notes: 1. B-flat, C, D, E-flat; 2. C, D, E-flat, F; 3. D, E-flat, F, G; 4. E-flat, F, G, A; 5. F, G, A, B-flat.

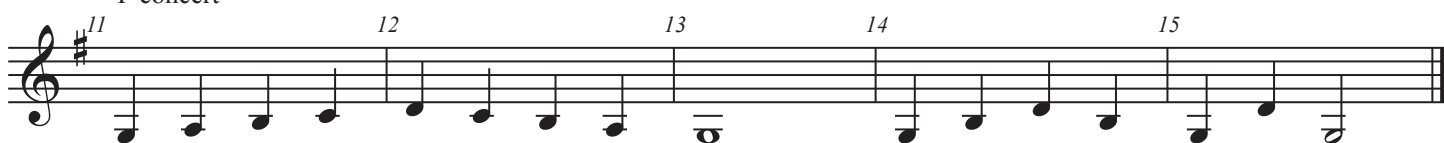
E flat concert



6 7 8 9 10

A musical staff in treble clef with a key signature of two flats (E-flat, B-flat) and a 4/4 time signature. It contains five measures of music, each starting with a finger number (6, 7, 8, 9, 10) above the first note. The notes are: 6. E-flat, 7. F, 8. G, 9. A, 10. B-flat. Each measure contains a sequence of quarter notes: 6. E-flat, F, G, A; 7. F, G, A, B-flat; 8. G, A, B-flat, C; 9. A, B-flat, C, D; 10. F, G, A, B-flat.

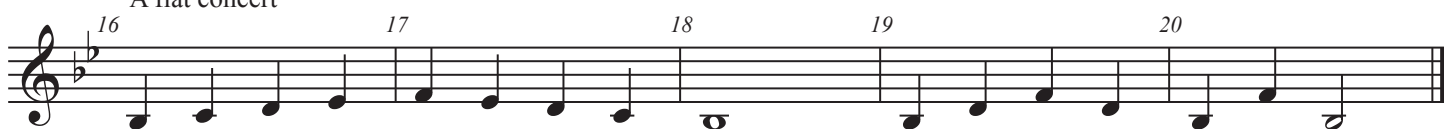
F concert



11 12 13 14 15

A musical staff in treble clef with a key signature of one sharp (F-sharp) and a 4/4 time signature. It contains five measures of music, each starting with a finger number (11, 12, 13, 14, 15) above the first note. The notes are: 11. F-sharp, 12. G, 13. A, 14. B, 15. C. Each measure contains a sequence of quarter notes: 11. F-sharp, G, A, B; 12. G, A, B, C; 13. A, B, C, D; 14. B, C, D, E; 15. G, A, B, C.

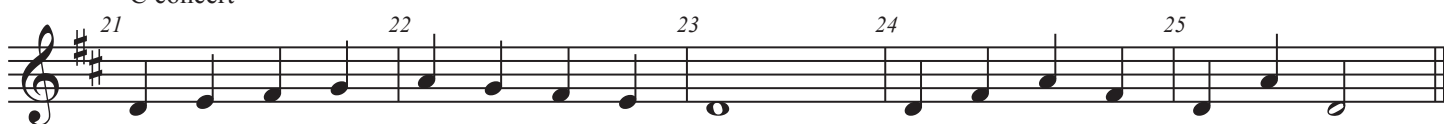
A flat concert



16 17 18 19 20

A musical staff in treble clef with a key signature of two flats (A-flat, E-flat) and a 4/4 time signature. It contains five measures of music, each starting with a finger number (16, 17, 18, 19, 20) above the first note. The notes are: 16. A-flat, 17. B-flat, 18. C, 19. D, 20. E-flat. Each measure contains a sequence of quarter notes: 16. A-flat, B-flat, C, D; 17. B-flat, C, D, E-flat; 18. C, D, E-flat, F; 19. B-flat, C, D, E-flat; 20. A-flat, B-flat, C, D.

C concert



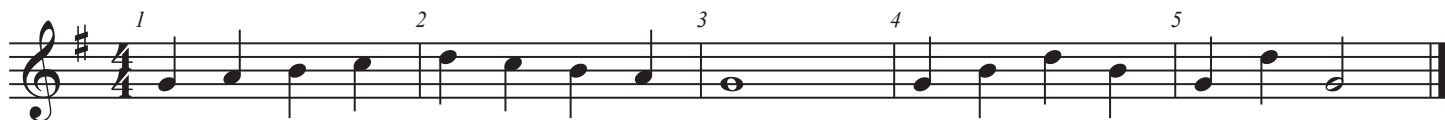
21 22 23 24 25

A musical staff in treble clef with a key signature of two sharps (C-sharp, F-sharp) and a 4/4 time signature. It contains five measures of music, each starting with a finger number (21, 22, 23, 24, 25) above the first note. The notes are: 21. C-sharp, 22. D, 23. E, 24. F-sharp, 25. G. Each measure contains a sequence of quarter notes: 21. C-sharp, D, E, F-sharp; 22. D, E, F-sharp, G; 23. E, F-sharp, G, A; 24. D, E, F-sharp, G; 25. C-sharp, D, E, F-sharp.



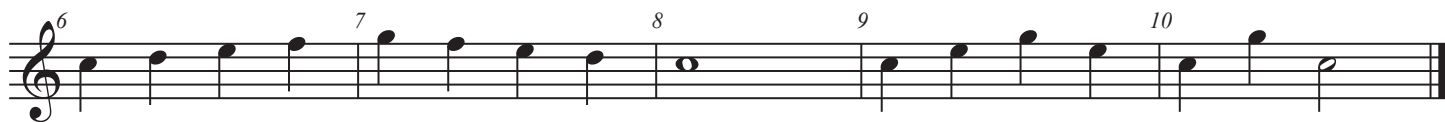
# Five Note Scales

B flat concert



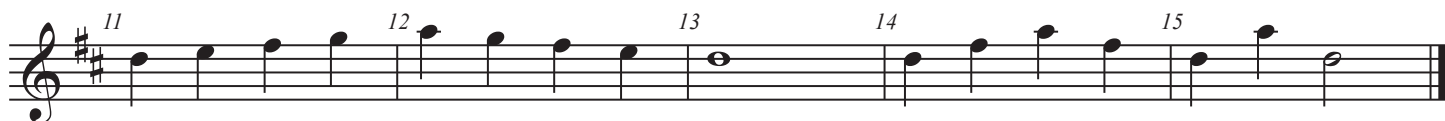
Musical notation for the B flat concert five-note scale. The scale is written on a single staff in treble clef with a key signature of one flat (Bb) and a 4/4 time signature. The notes are: Bb4 (quarter), Bb4 (quarter), Bb4 (quarter), Bb4 (quarter), Bb4 (quarter), Bb4 (half). Fingerings are indicated by numbers 1 through 5 above the notes.

E flat concert



Musical notation for the E flat concert five-note scale. The scale is written on a single staff in treble clef with a key signature of two flats (Bb, Eb) and a 6/8 time signature. The notes are: Eb4 (quarter), Eb4 (quarter), Eb4 (quarter), Eb4 (quarter), Eb4 (quarter), Eb4 (half). Fingerings are indicated by numbers 6 through 10 above the notes.

F concert



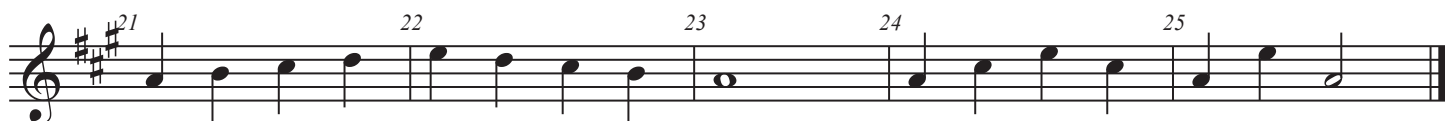
Musical notation for the F concert five-note scale. The scale is written on a single staff in treble clef with a key signature of two sharps (F#, C#) and a 4/4 time signature. The notes are: F#4 (quarter), F#4 (quarter), F#4 (quarter), F#4 (quarter), F#4 (quarter), F#4 (half). Fingerings are indicated by numbers 11 through 15 above the notes.

A flat concert



Musical notation for the A flat concert five-note scale. The scale is written on a single staff in treble clef with a key signature of one flat (Bb) and a 4/4 time signature. The notes are: Bb4 (quarter), Bb4 (quarter), Bb4 (quarter), Bb4 (quarter), Bb4 (quarter), Bb4 (half). Fingerings are indicated by numbers 16 through 20 above the notes.

C concert

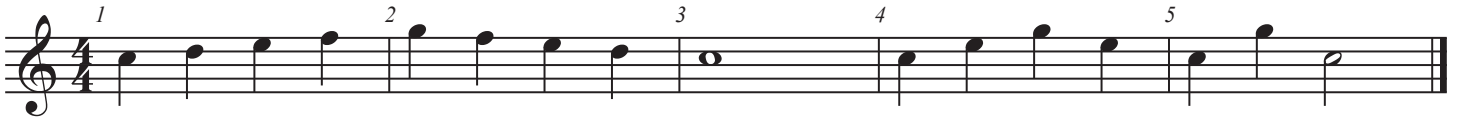


Musical notation for the C concert five-note scale. The scale is written on a single staff in treble clef with a key signature of two sharps (F#, C#) and a 4/4 time signature. The notes are: C5 (quarter), C5 (quarter), C5 (quarter), C5 (quarter), C5 (quarter), C5 (half). Fingerings are indicated by numbers 21 through 25 above the notes.

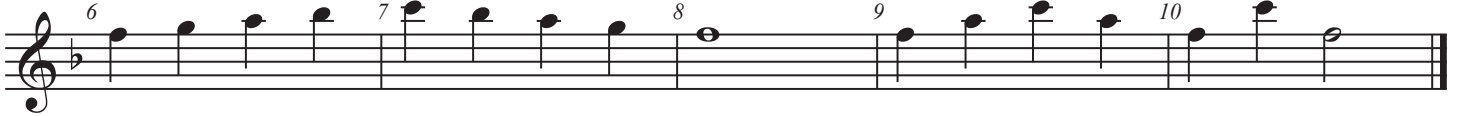
Tenor Sax

# Five Note Scales

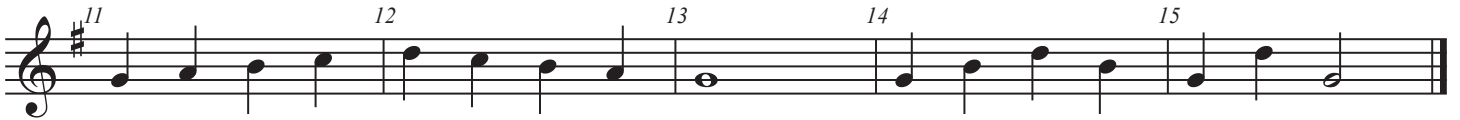
B flat concert



E flat concert



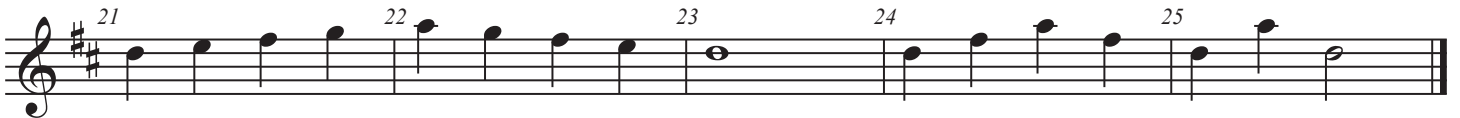
F concert



A flat concert



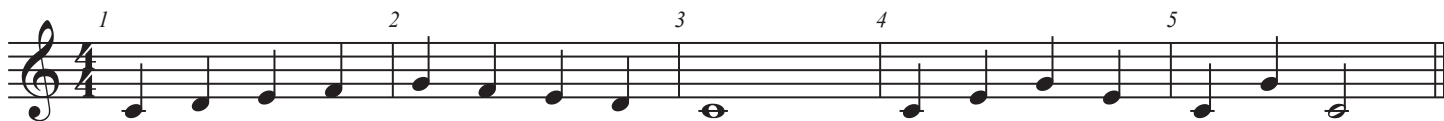
C concert



Trumpet in B $\flat$   
Baritone T.C.

# Five Note Scales

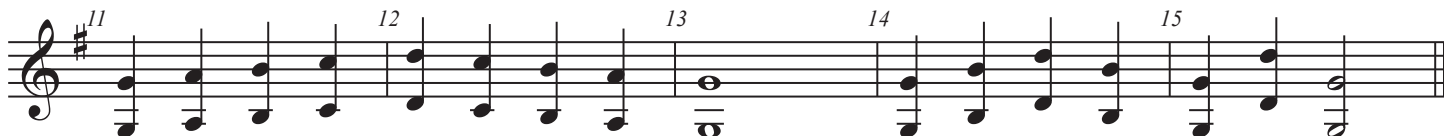
B flat concert



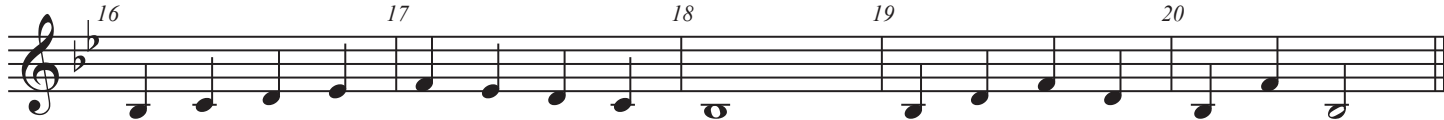
E flat concert



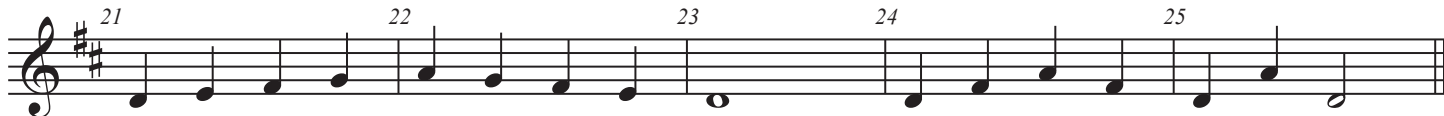
F concert



A flat concert



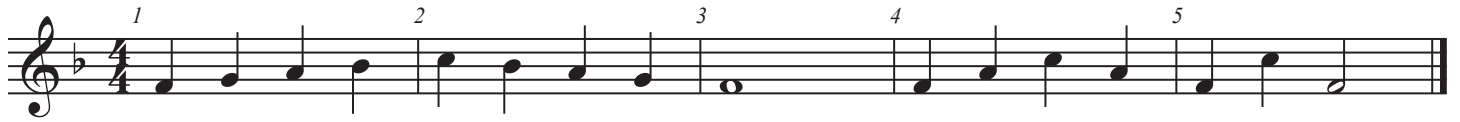
C concert



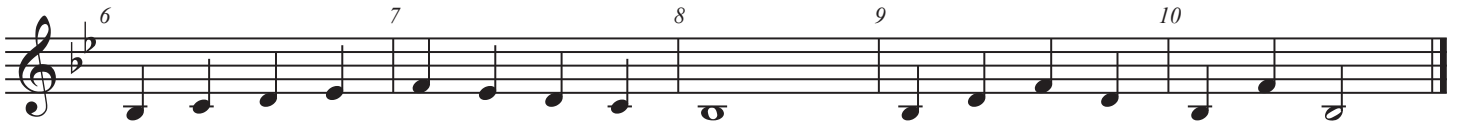
Horn in F

# Five Note Scales

B flat concert



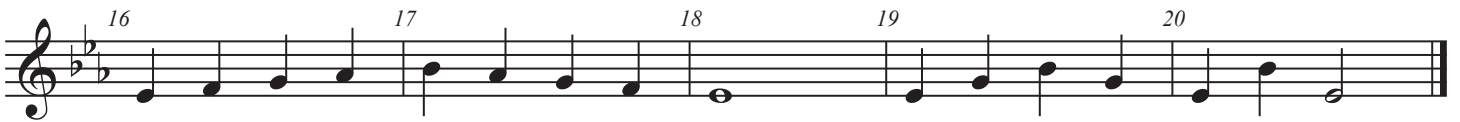
E flat concert



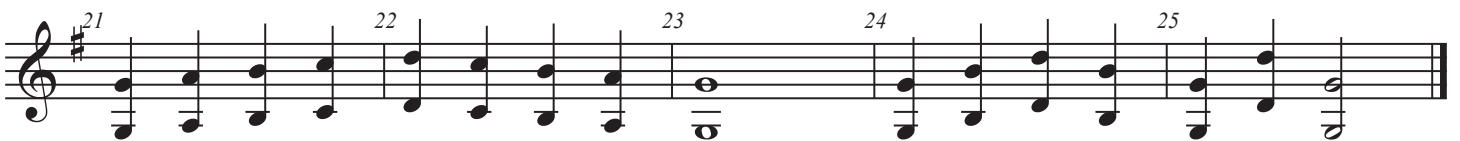
F concert



A flat concert



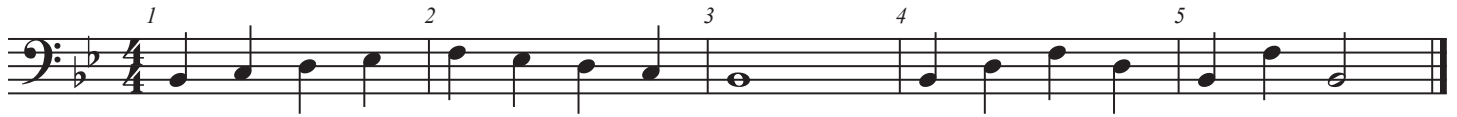
C concert



Trombone  
Euphonium  
Bassoon

# Five Note Scales

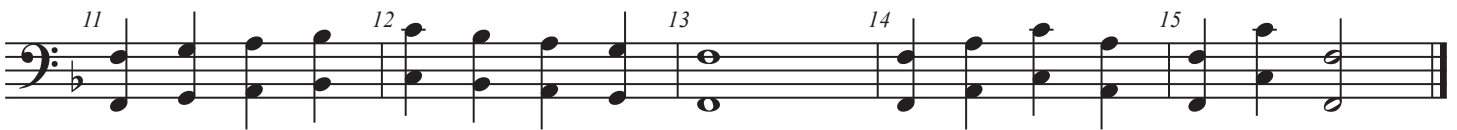
B flat concert



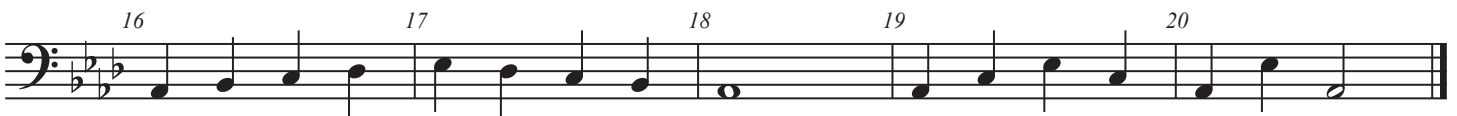
E flat concert



F concert



A flat concert



C concert



Tuba

# Five Note Scales

B flat concert

Musical notation for the B flat concert scale, measures 1-5. The scale is written in bass clef with a key signature of two flats (Bb and Eb) and a 4/4 time signature. The notes are: 1. Bb, 2. C, 3. D, 4. Eb, 5. E. The scale concludes with a double bar line.

E flat concert

Musical notation for the E flat concert scale, measures 6-10. The scale is written in bass clef with a key signature of three flats (Bb, Eb, and Ab) and a 4/4 time signature. The notes are: 6. F, 7. G, 8. Ab, 9. Bb, 10. C. The scale concludes with a double bar line.

F concert

Musical notation for the F concert scale, measures 11-15. The scale is written in bass clef with a key signature of one flat (Bb) and a 4/4 time signature. The notes are: 11. F, 12. G, 13. Ab, 14. Bb, 15. C. The scale concludes with a double bar line.

A flat concert

Musical notation for the A flat concert scale, measures 16-20. The scale is written in bass clef with a key signature of three flats (Bb, Eb, and Ab) and a 4/4 time signature. The notes are: 16. F, 17. G, 18. Ab, 19. Bb, 20. C. The scale concludes with a double bar line.

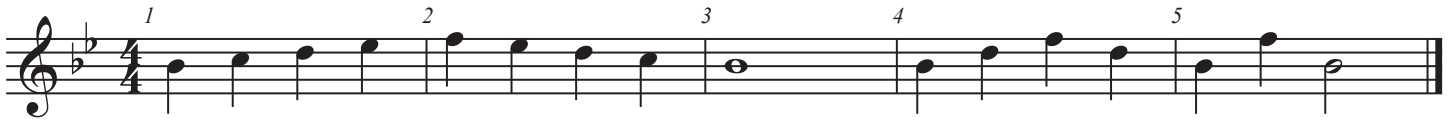
C concert

Musical notation for the C concert scale, measures 21-25. The scale is written in bass clef with a key signature of no sharps or flats and a 4/4 time signature. The notes are: 21. C, 22. D, 23. Eb, 24. E, 25. F. The scale concludes with a double bar line.

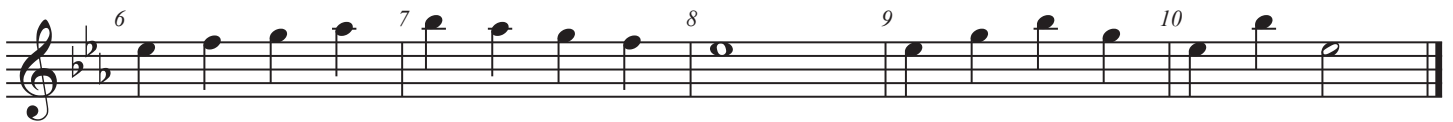
Mallets  
(high)

# Five Note Scales

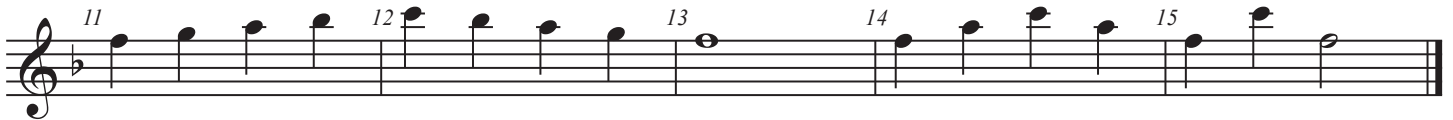
B flat concert



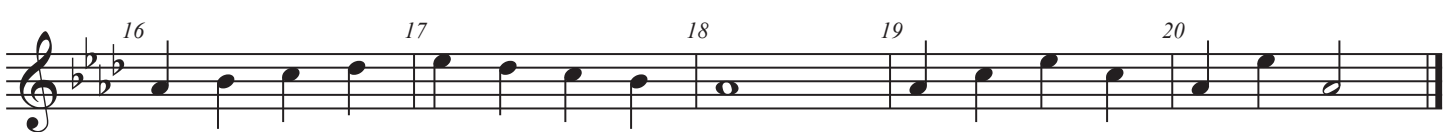
E flat concert



F concert



A flat concert



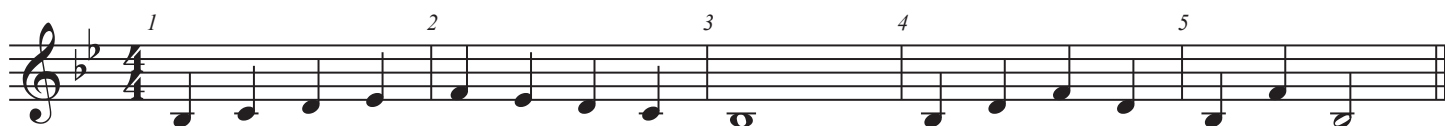
C concert



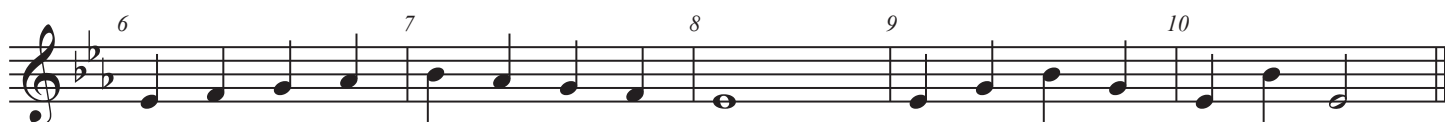
Mallets  
(low)

# Five Note Scales

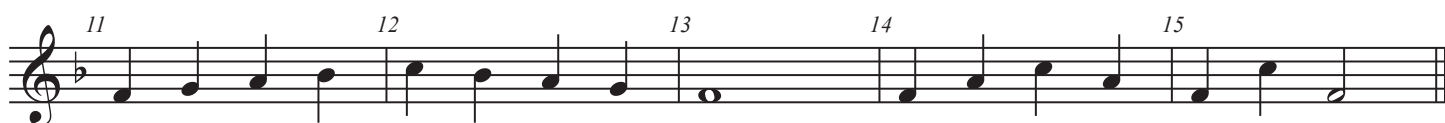
B flat concert



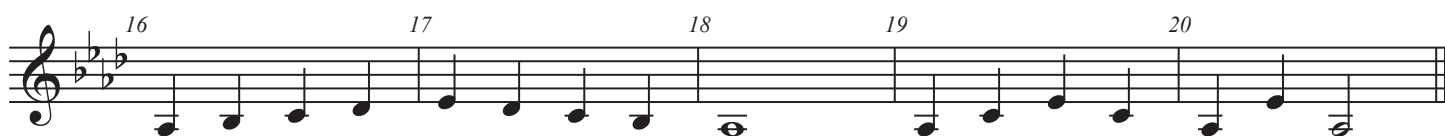
E flat concert



F concert



A flat concert



C concert

